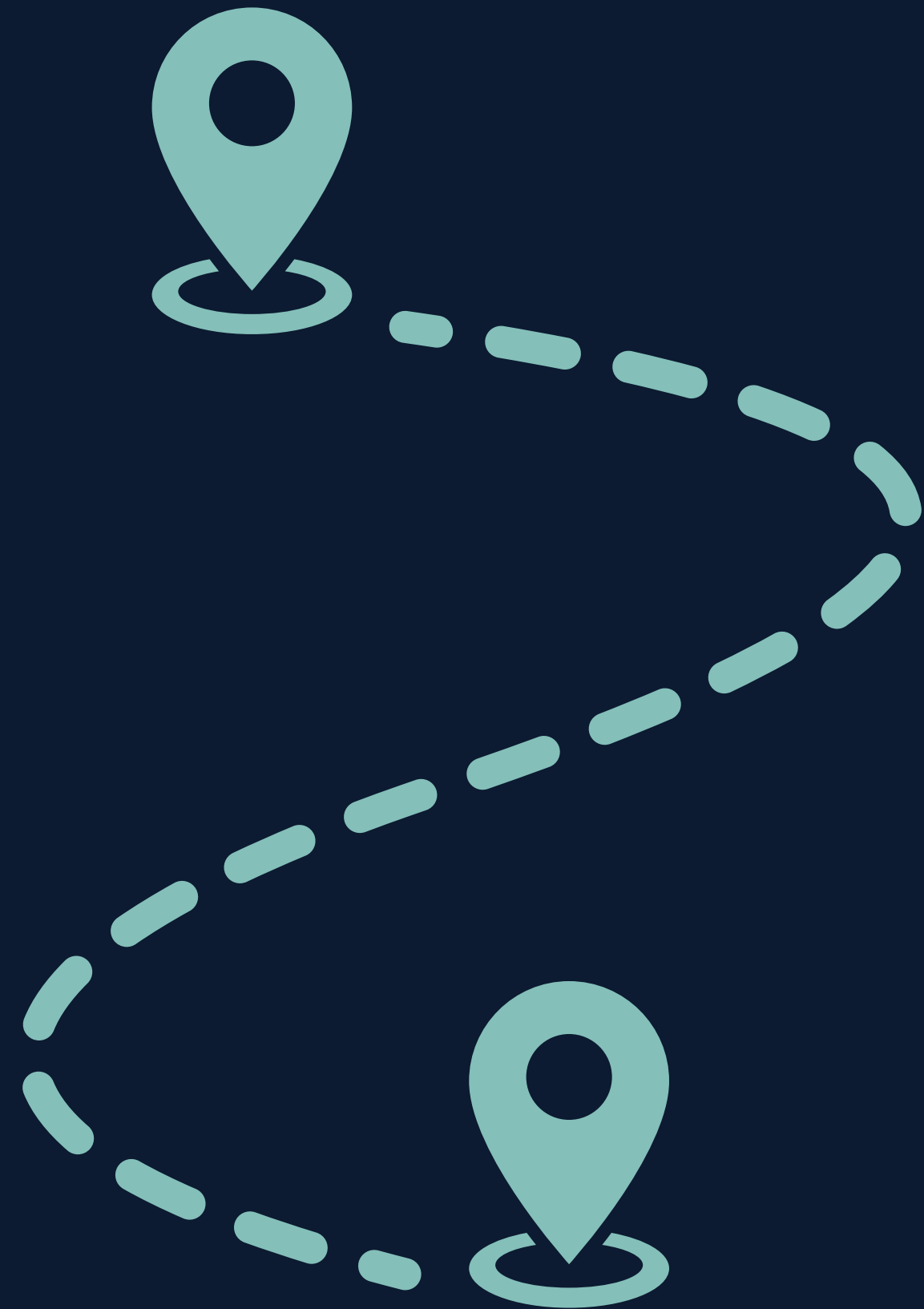


# ARC Area Development Application Process



# Agenda

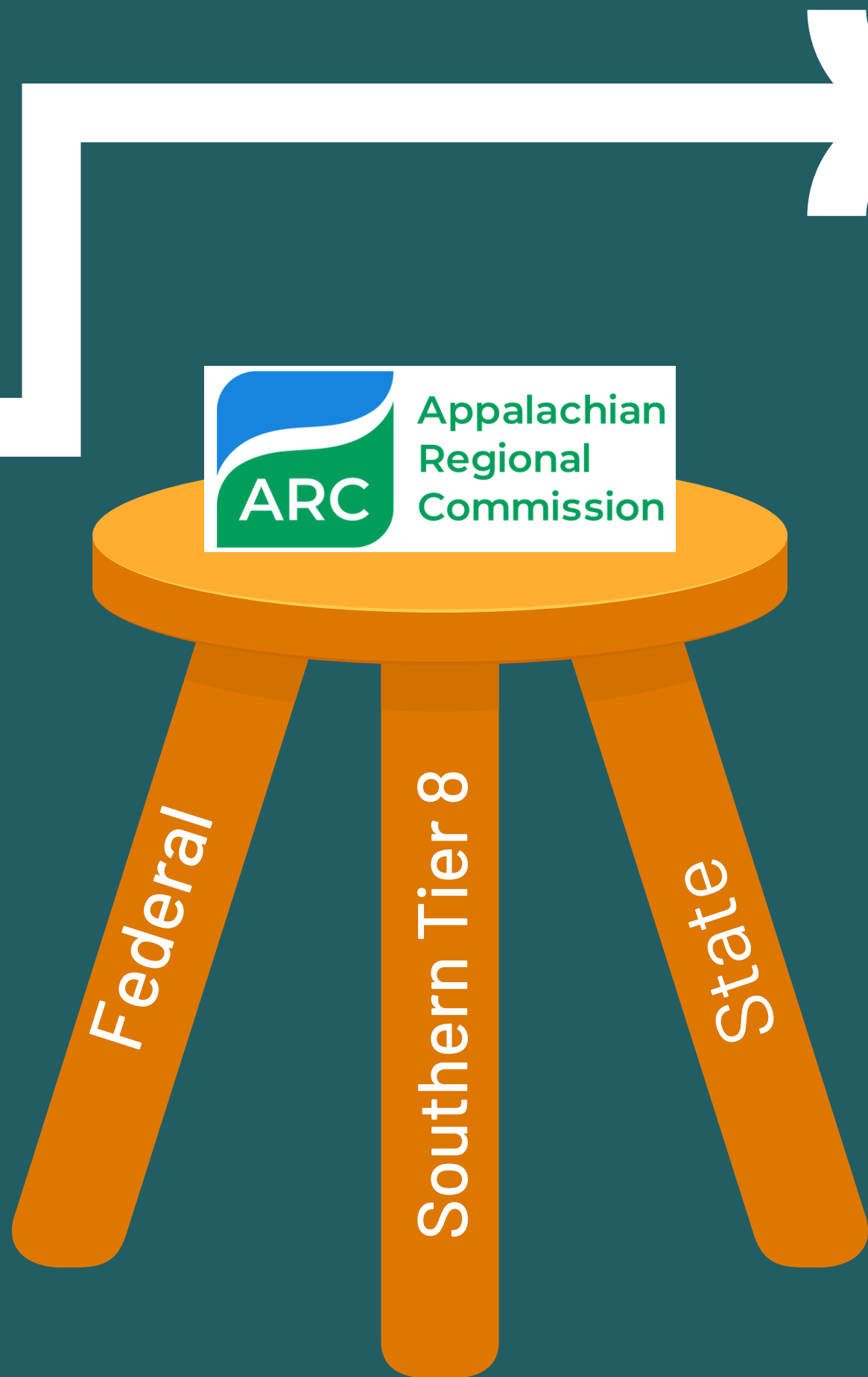
- 1 ARC Area Development Overview
- 2 Who Can Apply?
- 3 Is My Project a Good Fit for ARC?
- 4 How Can I Apply?
- 5 Pre-Application Overview

# ARC

The Appalachian Regional Commission (ARC) is a partnership between the federal government, state governments, and Local Development Districts (LDDs) to promote economic development in the Appalachian region.

- Federal Government: Provides funding and sets broad program priorities.
- State Governments: Develop state-specific strategies and allocate funds.
- Local Development Districts (LDDs): Work directly with communities to identify needs, develop projects, and implement ARC-funded initiatives.

This structure ensures a community-lead approach where economic development efforts are tailored to local needs while benefiting from federal and state resources.





# Area Development

The ARC Area Development Program provides funding to support projects that advance economic development and quality of life in the Appalachian region. The program focuses on creating jobs, building infrastructure, strengthening the workforce, and leveraging the region's natural and cultural assets to drive sustainable growth.

*Funding for new or expanding programs/ projects. CANNOT be continuation (AKA Maintenance of Effort).*

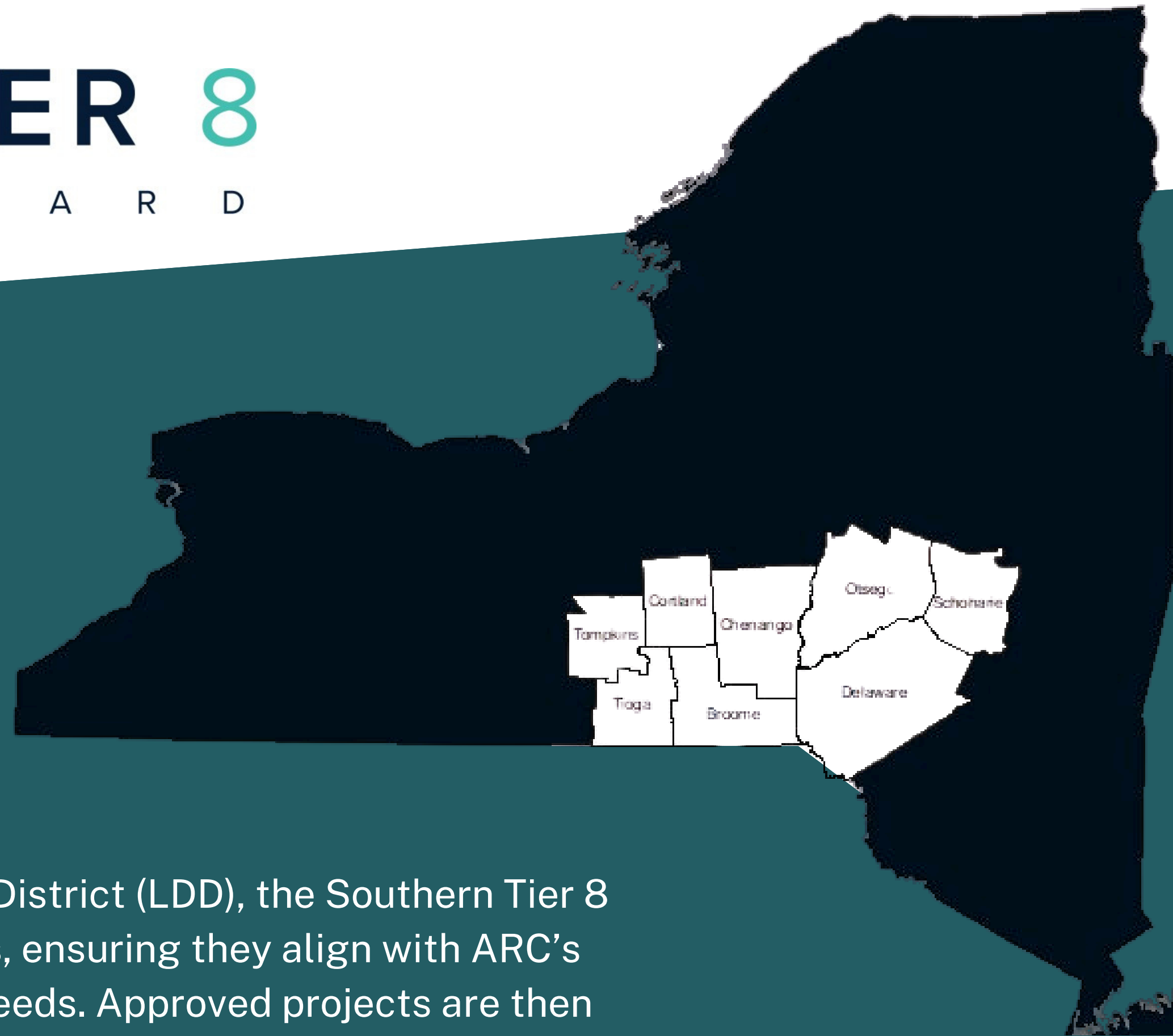


# SOUTHERN TIER 8

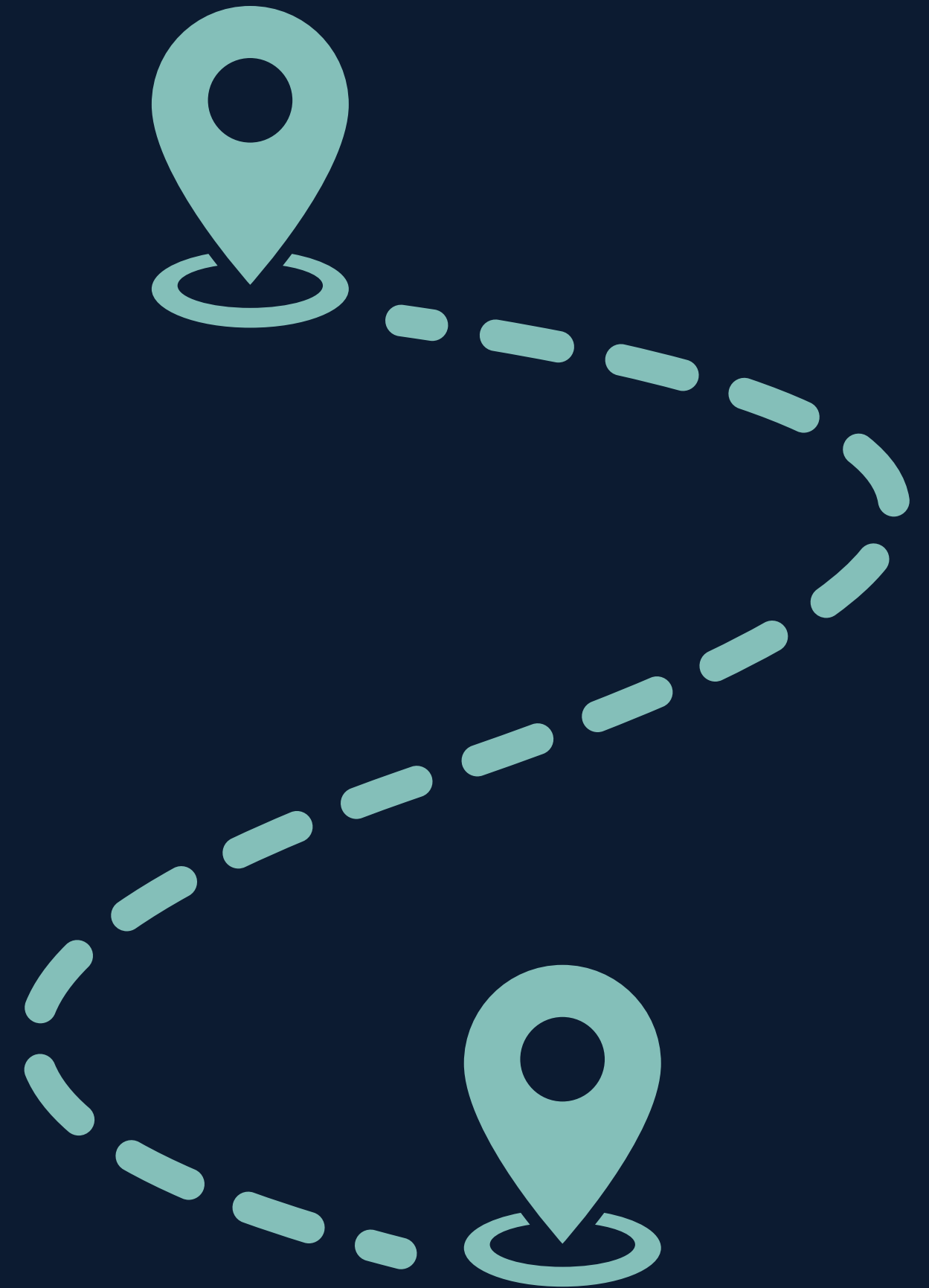
R E G I O N A L B O A R D

ST8 is the designated Local Development District (LDD) for this region, serving as a vital partner to local governments, nonprofits, and community. We play a pivotal role in guiding the region's access to funding through the Appalachian Regional Commission (ARC) Area Development Program.

Acting as the designated Local Development District (LDD), the Southern Tier 8 Board reviews and approves project proposals, ensuring they align with ARC's strategic priorities and the region's specific needs. Approved projects are then submitted to New York State and ARC for funding consideration and prioritization.



# Who can apply?



# ELIGIBLE APPLICANTS



GOVERNMENT ENTITIES



EDUCATIONAL INSTITUTIONS



NONPROFIT ORGANIZATIONS



ECONOMIC DEV ORGANIZATIONS



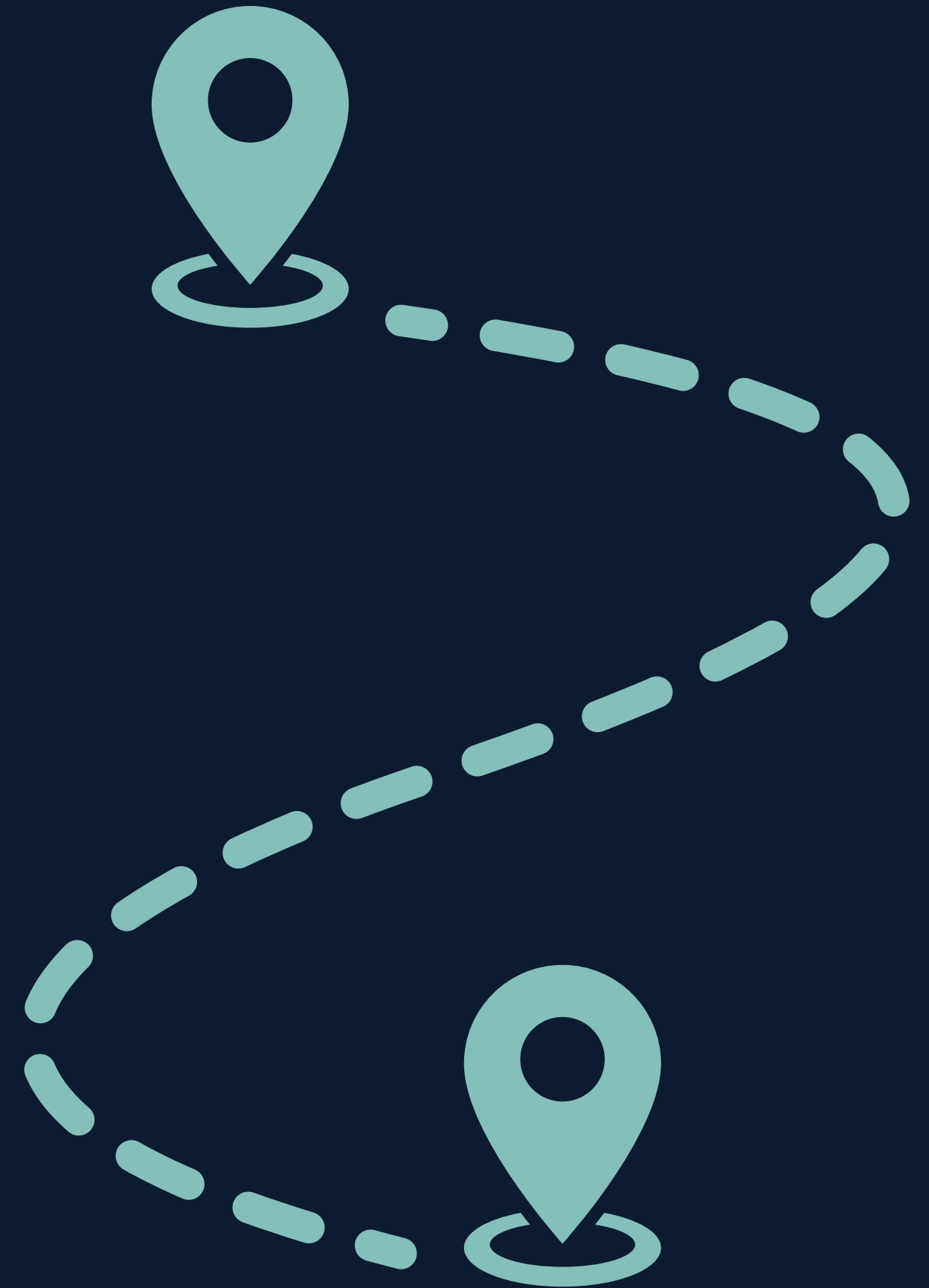
PUBLIC-PRIVATE PARTNERSHIPS\*

*\*For public-private partnerships, the public entity must be the primary applicant and is responsible for managing the project. Private sector partners can play a supporting role, with certain limitations on activities and funding structures.*

ARC funding is open to a range of organizations committed to advancing economic development and enhancing quality of life in the Appalachian region.

These include government entities, nonprofit groups, educational institutions, and partnerships that work to address the region's unique needs and opportunities.

Is my project  
a good fit for  
ARC?



# ARC Investment Priorities

ARC goal areas are critical for selecting projects because they ensure investments align with strategic priorities that address the Appalachian region's most pressing needs.

By focusing on these areas, chosen projects can maximize their impact, foster sustainable growth, and create long-term benefits for communities.



## 01 Building Appalachian Businesses

Invest in entrepreneurship and business development to create jobs and build a robust regional economy.



## 02 Building Appalachia's Workforce Ecosystem

Develop a skilled workforce prepared to meet the demands of existing and emerging industries.



## 03 Building Appalachia's Infrastructure

Build and improve infrastructure, including broadband, water, transportation and energy systems, to foster economic growth.



## 04 Building Regional Culture and Tourism

Strengthen the region's natural and cultural assets to support economic development and community well-being.



## 05 Building Community Leaders and Capacity

Enhance the ability of local communities and leaders to plan, implement, and manage projects effectively.

# Regional and State Priorities

Aligning with state and local economic development plans is essential when applying for ARC funding to ensure projects address regional priorities and demonstrate a cohesive strategy for growth.

Projects that align with these plans are more likely to gain support from stakeholders, fit into broader economic initiatives, and show their potential to create lasting impact, increasing their chances of approval and successful implementation.

## NYS ARC Strategy

State-level goals, such as fostering economic opportunities, improving workforce readiness, and enhancing infrastructure, are tailored to the unique needs of Appalachian communities within New York. Demonstrating alignment with these goals strengthens a project's case for funding by showing its relevance to state priorities and its potential to contribute to regional growth, sustainability, and economic stability, while also advancing ARC's overarching mission.

Demonstrating alignment with state goals not only positions the project as a strong candidate for funding but also ensures it integrates seamlessly with complementary initiatives beyond ARC, leveraging broader programmatic synergies to maximize impact



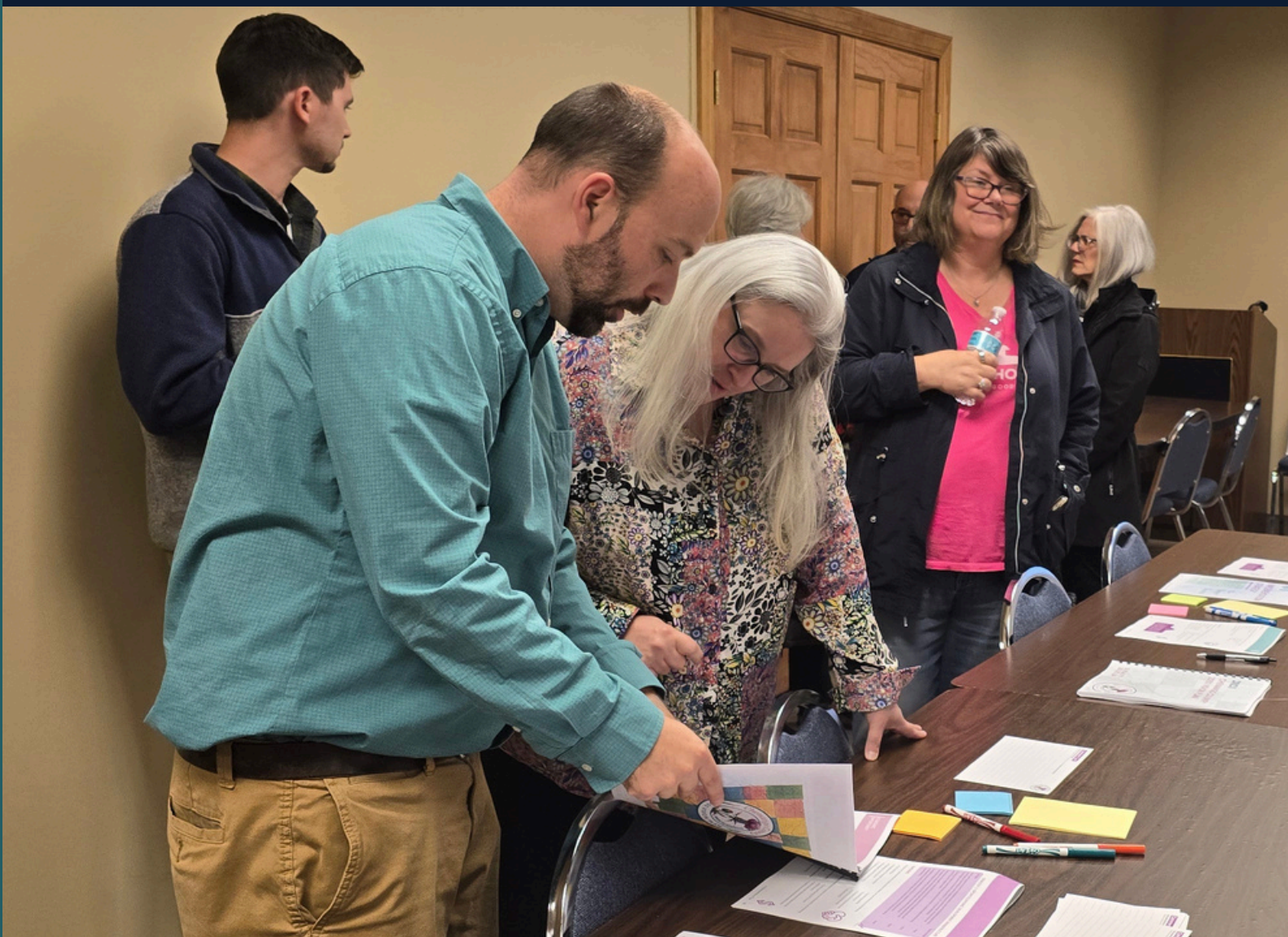
## Southern Tier 8 CEDS



Aligning with the Southern Tier 8 Comprehensive Economic Development Strategy (CEDS) is essential to ensure that projects reflect the priorities and needs of the local region. The CEDS outlines strategies to promote regional economic growth, strengthen workforce development, and enhance infrastructure across the Southern Tier.

By demonstrating alignment with this plan, projects show their relevance to local stakeholders, address pressing regional challenges, and contribute to the area's long-term prosperity. This alignment also underscores a project's role in advancing both state and federal ARC goals while remaining deeply rooted in the region's unique economic and community priorities.

# Key Considerations for Project Planning



## → Project Impact

- Will the project have a broad, regional impact, enable replication across the region, and/or be integrated into the broader collaborative framework?
- Does the project respond to the unique needs of the region's demographics or key industry sectors?
- Partnerships: Q&A Session, 4/7/25 at Noon

## → Project Cost and Match

- Applications are limited to a maximum of \$250,000
- All ST8 Region counties are designated as "Transitional" requiring 50% matching funds of the total project cost.
- Budgets: Q&A Session, 4/9/25 at 2pm

## → Project Alignment

- Does the project meet the strategic goals of ARC? New York State? ST8 Comprehensive Economic Development Strategy?
- Have you been engaged with Southern Tier 8's strategic planning efforts, industry summits and other collaborative efforts?
- Performance Measures: Q&A Session, 4/14/225 at 2pm

## → Project Sustainability

- Grants generally 12-18 months
- How will the project or program be sustained in the long term?
- Maintenance and operation? Ongoing programmatic costs?
- Sustainability: Q&A Session, 4/17/25 at Noon

# Partnerships

## Letter of Commitment

- *Why are we partnering?*
- *Who is doing what?*
- *What resources are we contributing?*
- *How will we coordinate?*
- *How will we measure our shared success?*



## Shared Goals

Clear, mutually beneficial objectives

## Defined Roles

Specific Contributions and partnership structure

**Strong Projects.  
Strong Results.**

## Resource Commitments

Financial, in-kind or expertise based contributions

## Communication and Metrics

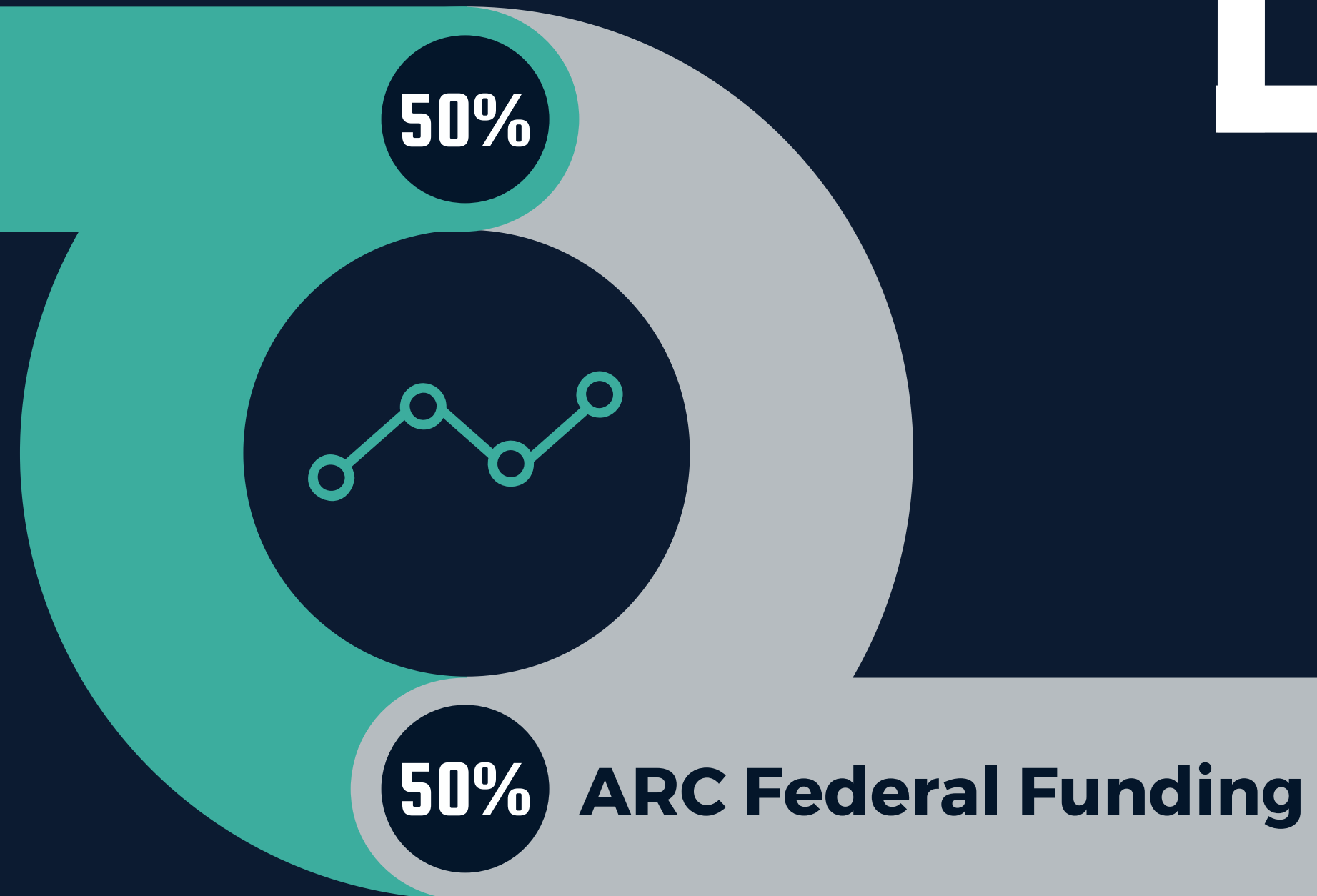
Transparent collaboration, progress tracking, and impact evaluation

# MEET THE MATCH



## Local Match

- ↙ LOCAL FUNDS *General fund allocations, municipal bonds, capital funds, revenues*
- ↙ STATE GRANTS *CFA, DRI, Others*
- ↙ IN-KIND *Municipal staff time, materials, equipment, fringe, indirect, etc.*
- ↙ PHILANTHROPIC CONTRIBUTIONS *Foundation grants, donations, funds raised by non-profit partners*
- ↙ PRIVATE INVESTMENTS *Direct investments, land/building donations, equipment/training/infrastructure support*
- ↙ OTHER FEDERAL PROGRAMS *EDA, USDA, DOL, CDBG, other non-ARC funds*



➔ Up to \$250,000

# Performance Measures

ARC performance measures are specific metrics used to evaluate the impact and effectiveness of funded projects. They help applicants build strong proposals by providing a framework to define goals, track outcomes, and ensure alignment with ARC's strategic priorities.

By clearly incorporating these measures, projects can demonstrate clear, measurable benefits, making them more competitive for funding.

## **GUIDANCE:**

<https://www.arc.gov/resource/guide-to-arc-project-performance-measures/>

<https://admin.steny.org/southern-tier-8/assets/ca58ybf5geo8gcck>



## **01 Building Appalachian Businesses**

- New businesses created
- Private investment leveraged
- Jobs created or retained



## **02 Building Appalachia's Workforce Ecosystem**

- Individuals trained or certified
- Trainees who gain employment
- Partnerships with educational institutions



## **03 Building Appalachia's Infrastructure**

- Households or businesses improved
- Miles of infrastructure upgraded
- Communities served



## **04 Building Regional Culture and Tourism**

- Increase in tourism related revenue
- Partnerships or collaborations formed
- Community programs supported



## **05 Building Community Leaders and Capacity**

- Leaders or organizations trained
- Partnerships or collaborations formed
- Strategies or planning documents developed

# Project Sustainability

Sustaining a project over the long term requires a strong foundation that maintains momentum, sustains resources, and ensures lasting impact.

- **Financial Stability**

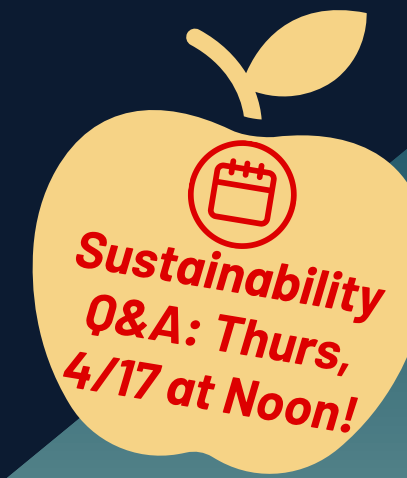
- Ongoing, diversified funding
- Long-term financial planning (revenues, grants, cost-sharing)
- Operations/maintenance

- **Organizational Capacity**

- Continuity, clear structure and roles
- Expertise, skilled staff and partners
- Performance through systems for ongoing tracking

- **Community Support**

- Stakeholder engagement and transparency to maintain relevance
- Demonstrated success and benefits
- Adaptability to address evolving needs
- Commitment to long-term use



## Sustainability

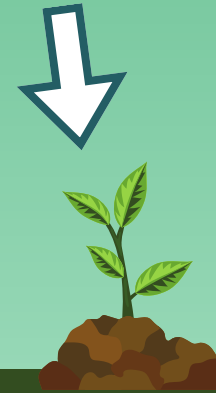
Financial Stability  
Organizational Capacity  
Community Support

**Idea**  
Strategic/  
Comprehensive  
Planning



### Foundation

Establish Partners  
Align supporting  
data



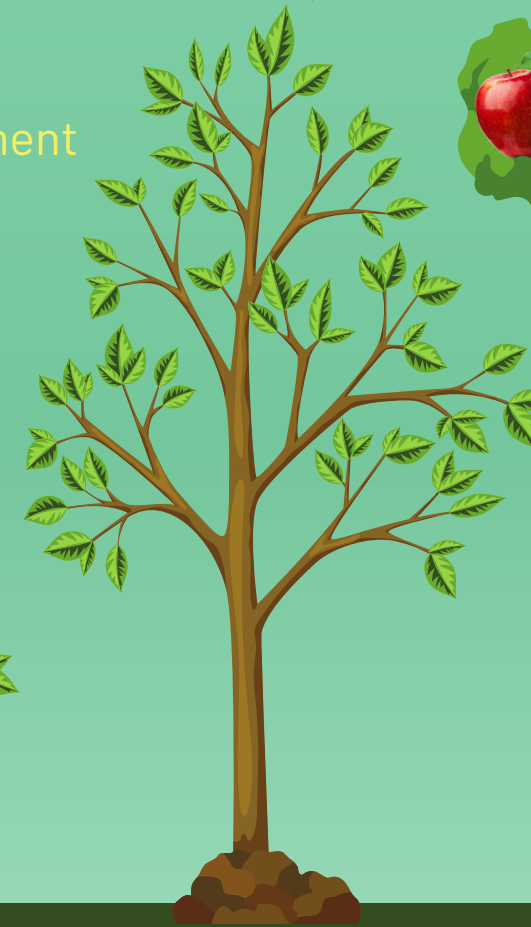
### Initiation

ARC GRANT  
Match Commitment



### Implementation

Performance  
Measures/Tracking



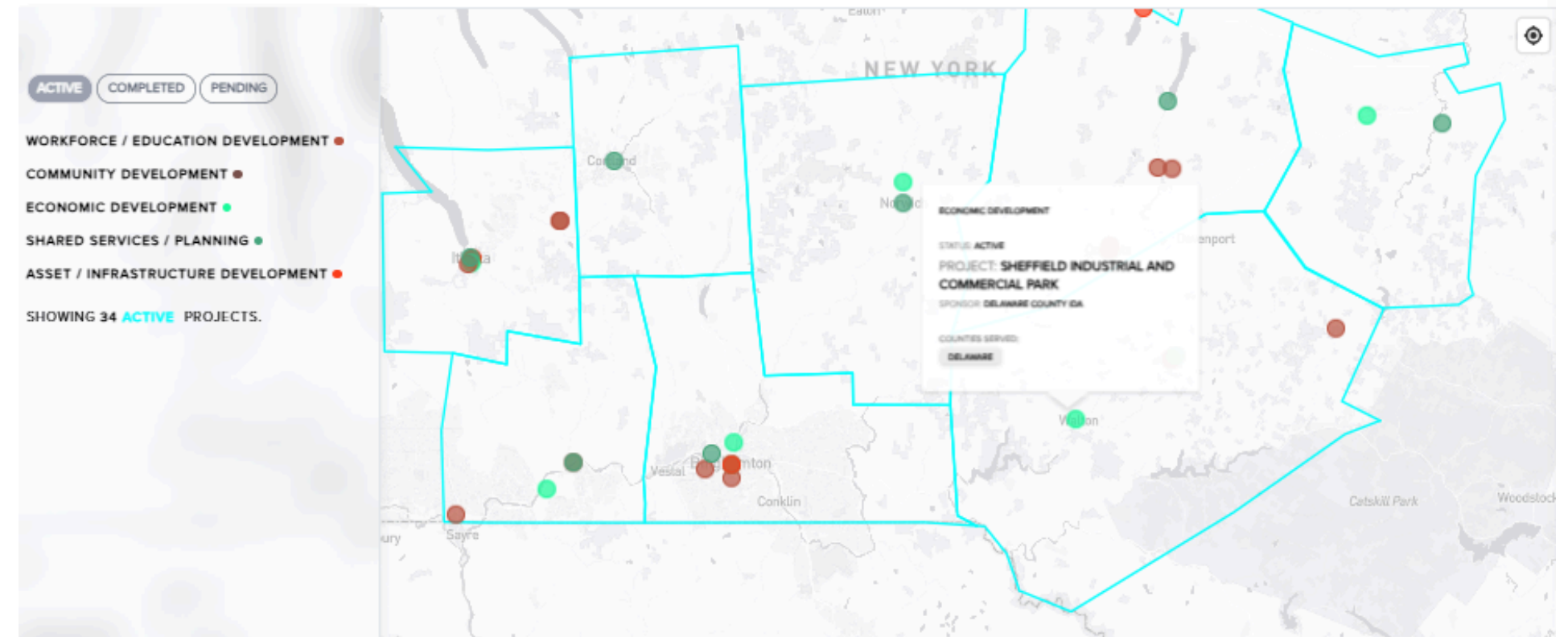
# SO TIER

## Showcase of Projects

[https://www.so-tier.com/  
public-investments](https://www.so-tier.com/public-investments)

### PUBLIC PROJECTS

\$72,427,721 AWARDED FOR 34 ACTIVE PROJECTS



**CAREER DESTINATIONS - CONNECTING STUDENTS TO LOCAL JOBS AND CAREERS**  
WORKFORCE / EDUCATION DEVELOPMENT

INVESTMENT: \$99,817

INVESTOR: ARC

PARTNERS/SPONSORS: DCMO BOCES

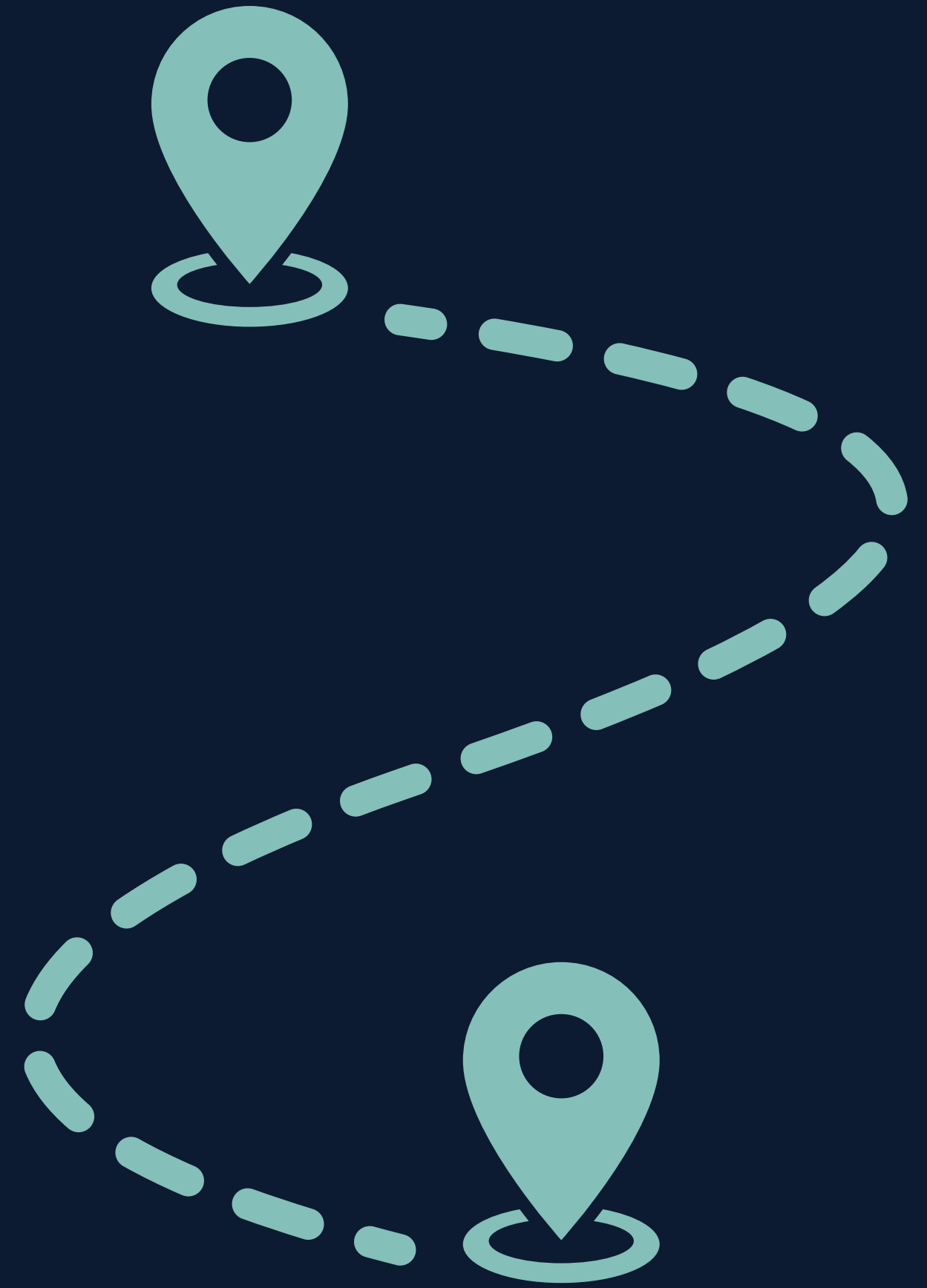
YEAR AWARDED: 2020

Prepare students to pursue higher education and employment within local industries, such as Advanced Manufacturing, Agriculture, Healthcare, and Business

IMPACT

WORKFORCE SERVED: 763

# How can I apply?



# ARC AREA DEVELOPMENT ROADMAP

Projects submitted for ARC funding are reviewed for inclusion in the following fiscal year, allowing for comprehensive evaluation and alignment with funding priorities. The ARC application process doubles as a project development tool, enabling applicants to refine their proposals for feasibility, regional impact, and strategic alignment. ST8 staff offers technical assistance throughout the process to streamline applications and ensure the region's projects are competitive and well-prepared.

## Pre-application

Submit your pre-application with basic information about your project.



Feedback and Adjustments



## Grant Review Committee

Pre-application is reviewed by ST8 staff and the ST8 Planning Committee for regional alignment and feasibility. Projects that are "ready" will be selected to move on to next steps.

## Full Application

If the pre-app is approved, applicants receive an invitation to submit a full application with more detailed project plans and budget.



Feedback and Adjustments



## Board Approval

After full applications are reviewed by the Planning Committee, recommendations for project funding are sent to the full ST8 board for their approval.

## New York State Review

Funding packages are sent to NYS Department of State (DOS) to review for alignment with State priorities.



Feedback and Adjustments



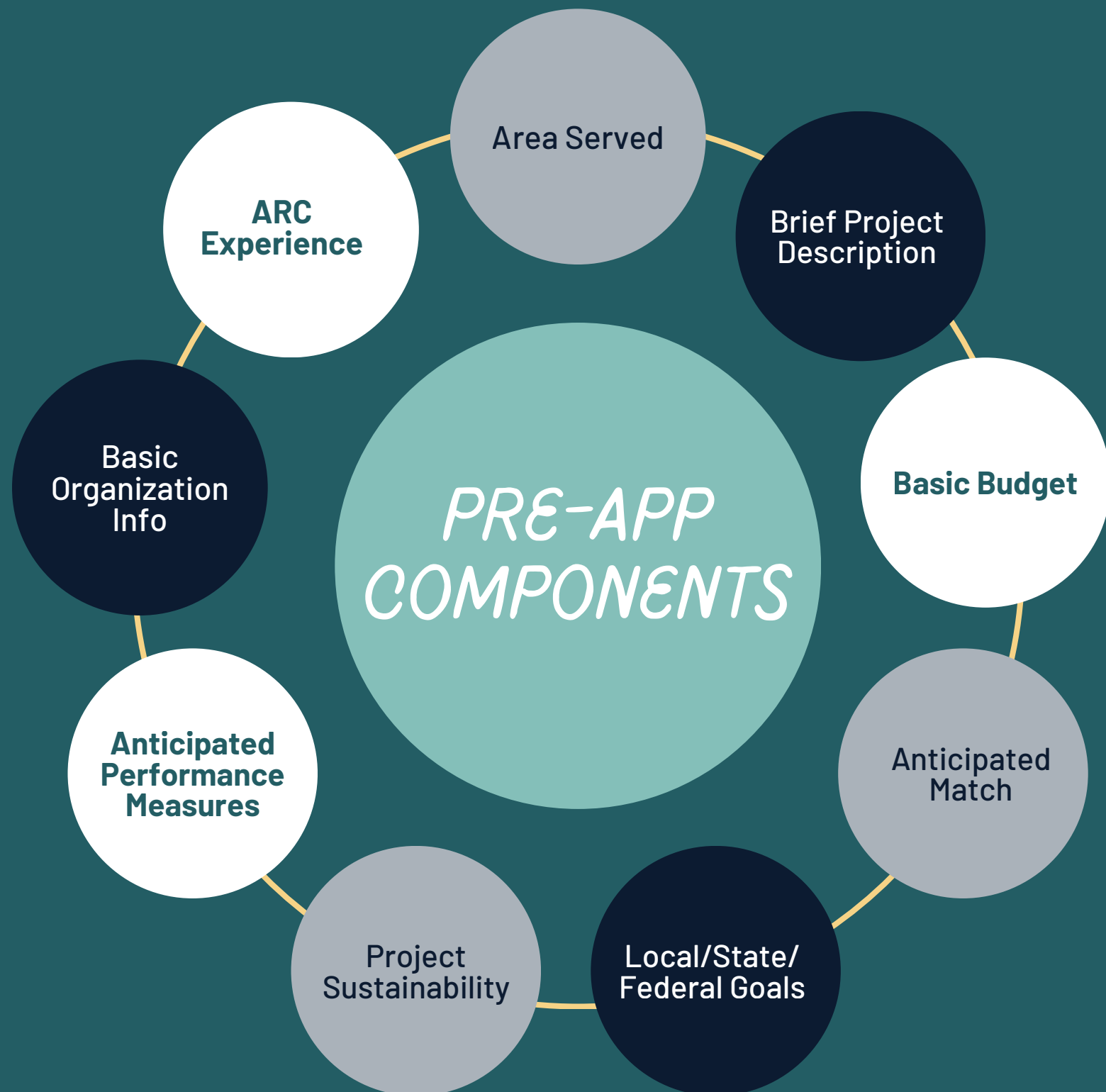
## ARC Review

Once review is completed, projects are forwarded to ARC for final approval and funding consideration.

**DEADLINE**  
**JUNE 15TH**  
**3PM**

# Submit your pre-application now...

A pre-application provides an initial project overview to assess eligibility and alignment with ARC priorities, offering feedback to refine proposals before full application.



## Items to address early:

### *Federal Unique Entity Identifier (UEI)*

Required for all federal funding applications, ensuring your organization is properly register in the System for Award Managment. Expires annual so check status.

### *Letter of Alignment*

Letter from the County Planning Directors in the counties served is required. This ensures that the project is also in alignment with local planning goals.

**Submit your request to Planning Directors by June 11<sup>th</sup> to ensure you get it in time!**

Find the pre-application and Planning Director Contacts here:

<https://southerntier8.org/how-to-apply>