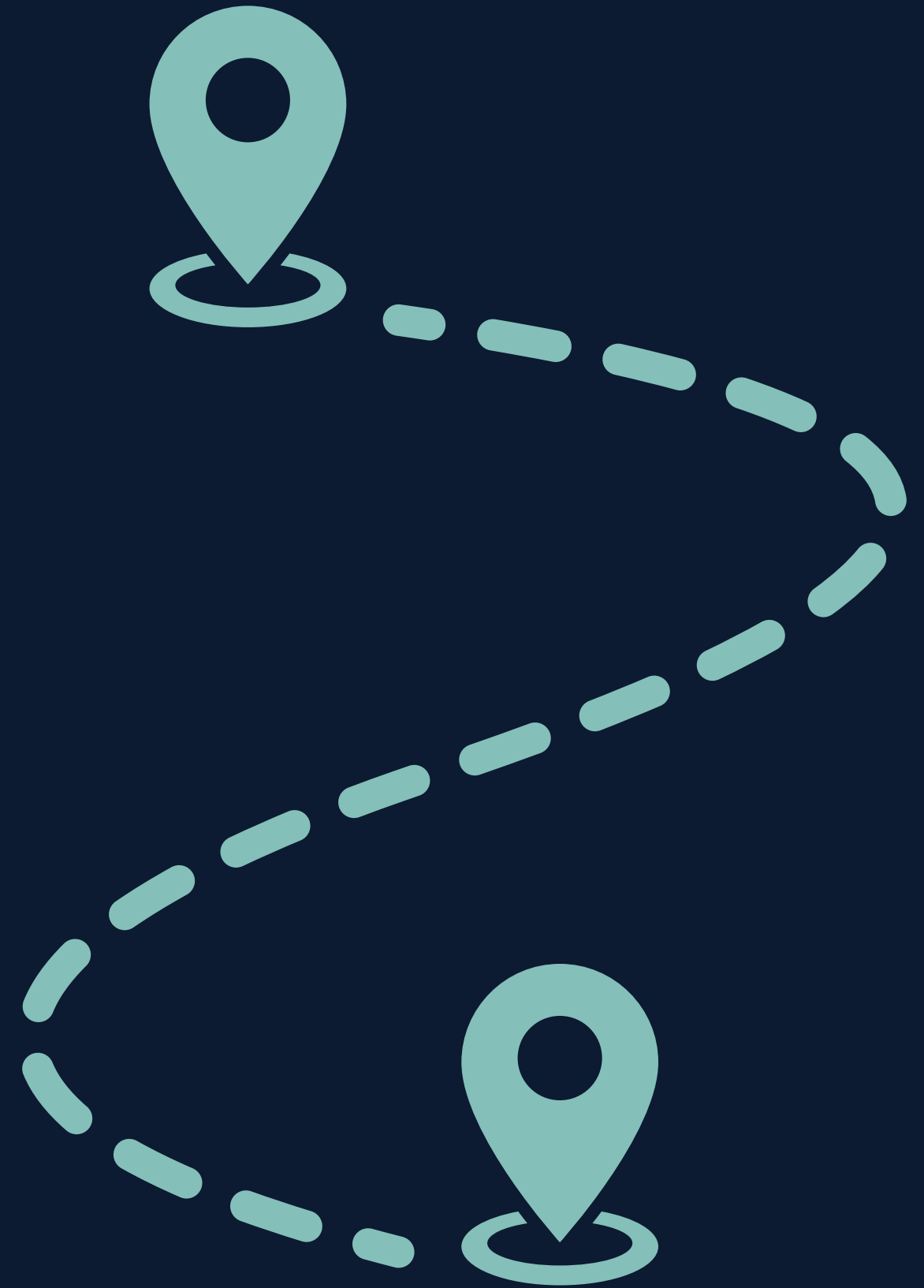


ARC Area Development Application Process



SOUTHERN TIER 8
R E G I O N A L B O A R D

Welcome

- Jen Gregory, Executive Director
- Beth Lucas, Regional Planning Director
- Board Members:

<https://southerntier8.org/regional-organization/>

Project Development Q&A

APR
4

ARC Program Overview

APR
7

Partnerships

APR
9

Budgeting

APR
14

Performance
Measures

APR
17

Project
Sustainability

SOUTHERN TIER 8
R E G I O N A L B O A R D



Agenda

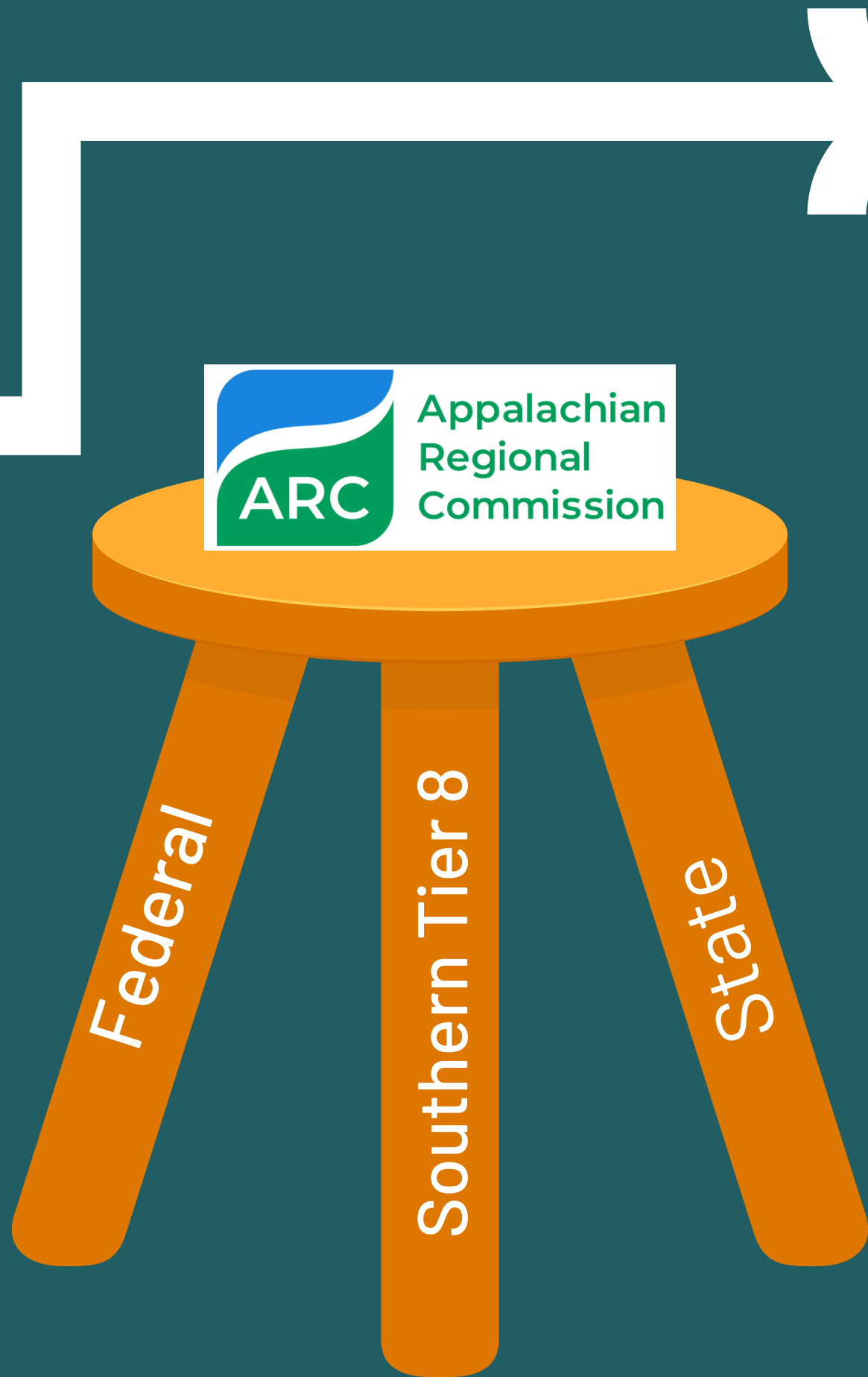
- 1 ARC Area Development Overview
- 2 Who Can Apply?
- 3 Is My Project a Good Fit for ARC?
- 4 How Can I Apply?
- 5 Pre-Application Overview

ARC

The Appalachian Regional Commission (ARC) is a partnership between the federal government, state governments, and Local Development Districts (LDDs) to promote economic development in the Appalachian region.

- Federal Government: Provides funding and sets broad program priorities.
- State Governments: Develop state-specific strategies and allocate funds.
- Local Development Districts (LDDs): Work directly with communities to identify needs, develop projects, and implement ARC-funded initiatives.

This structure ensures a community-lead approach where economic development efforts are tailored to local needs while benefiting from federal and state resources.



Area Development

The ARC Area Development Program provides funding to support projects that advance economic development and quality of life in the Appalachian region. The program focuses on creating jobs, building infrastructure, strengthening the workforce, and leveraging the region's natural and cultural assets to drive sustainable growth.

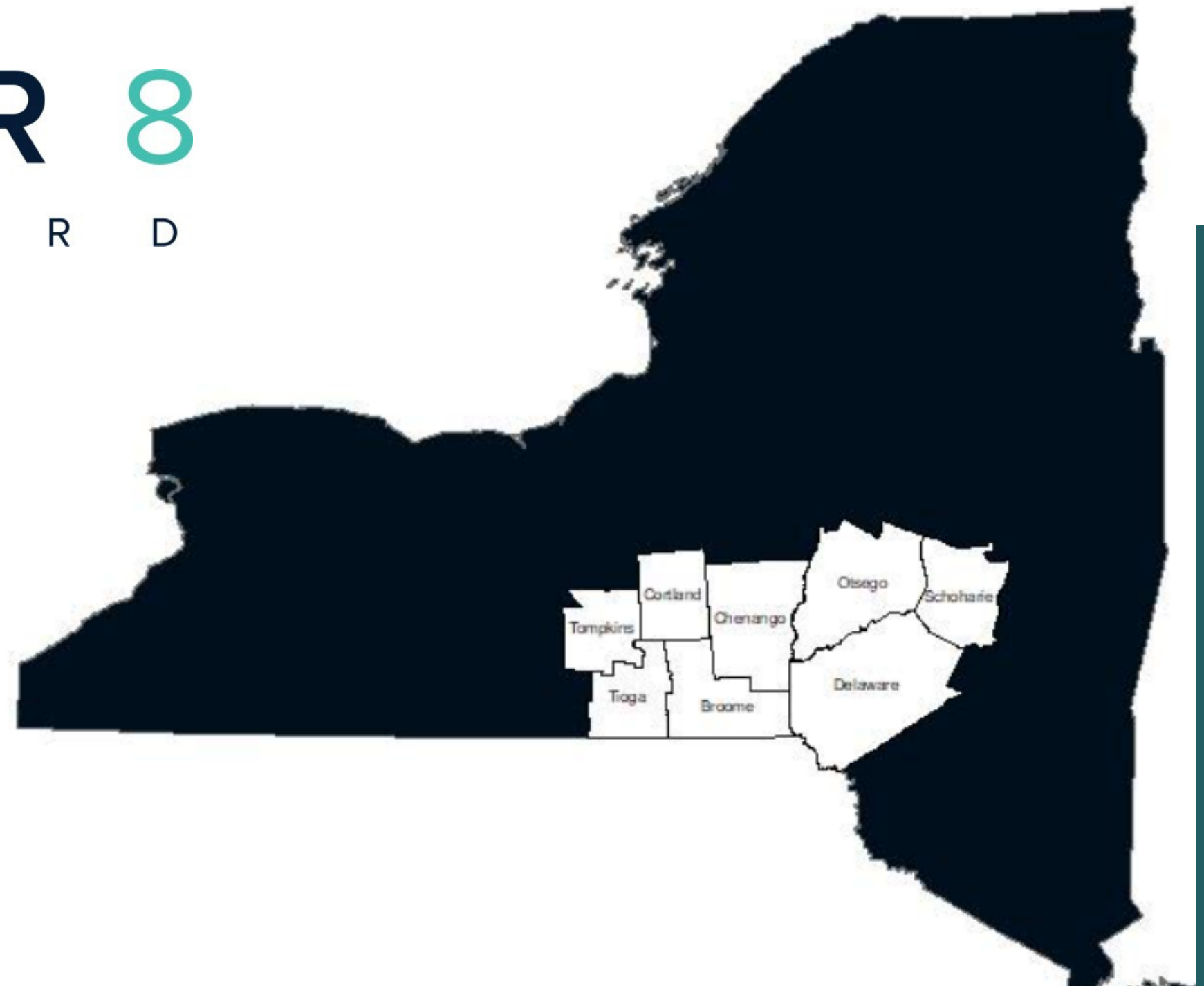
Funding for new or expanding programs/projects. CANNOT be continuation (AKA Maintenance of Effort).



SOUTHERN TIER 8

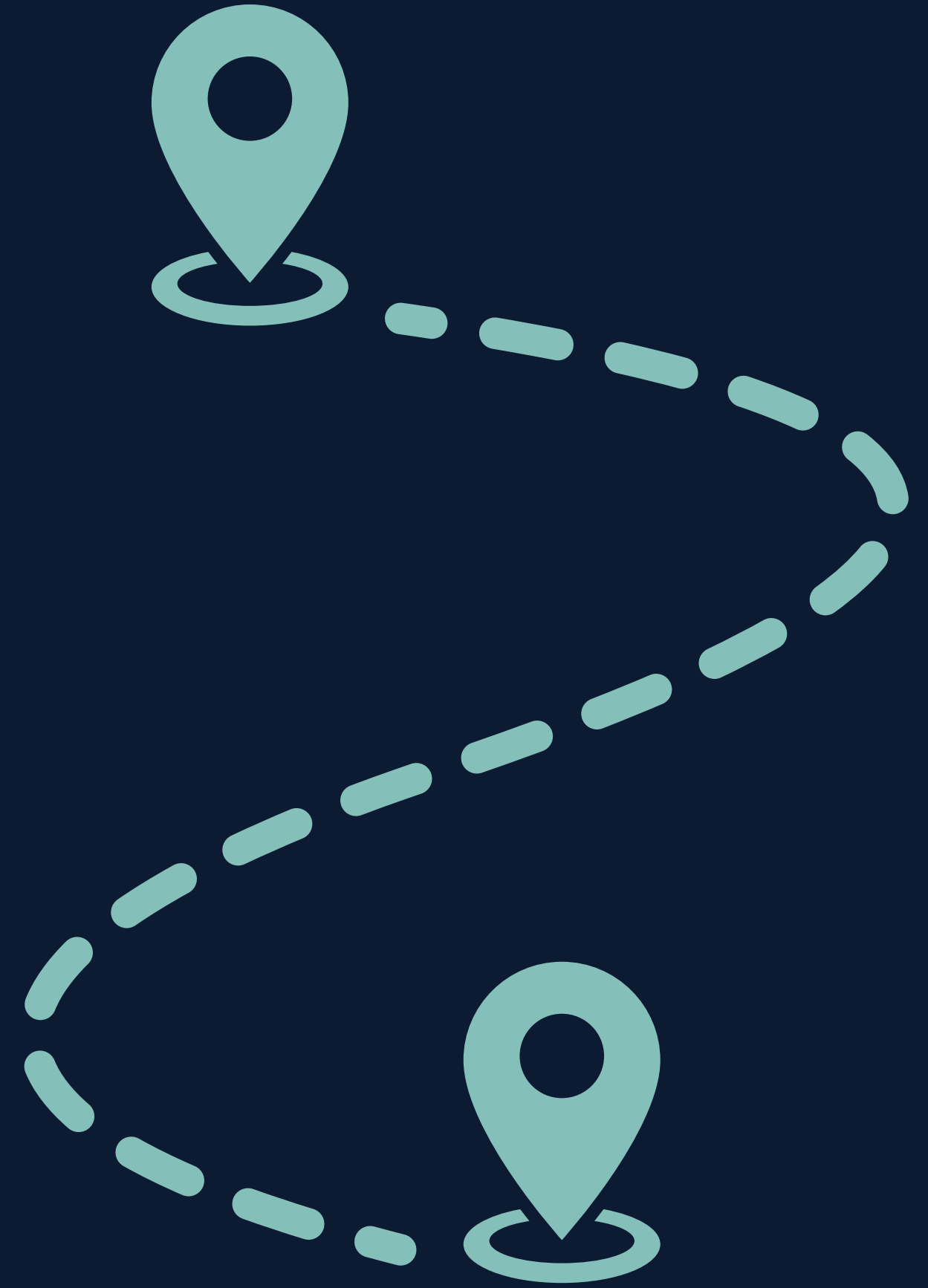
R E G I O N A L B O A R D

ST8 is the designated Local Development District (LDD) for this region, serving as a vital partner to local governments, nonprofits, and community. We play a pivotal role in guiding the region's access to funding through the Appalachian Regional Commission (ARC) Area Development Program.



Acting as the designated Local Development District (LDD), the Southern Tier 8 Board reviews and approves project proposals, ensuring they align with ARC's strategic priorities and the region's specific needs. Approved projects are then submitted to New York State and ARC for funding consideration and prioritization.

Who can apply?



ELIGIBLE APPLICANTS



GOVERNMENT
ENTITIES



EDUCATIONAL
INSTITUTIONS



NONPROFIT
ORGANIZATIONS



ECONOMIC DEV
ORGANIZATIONS



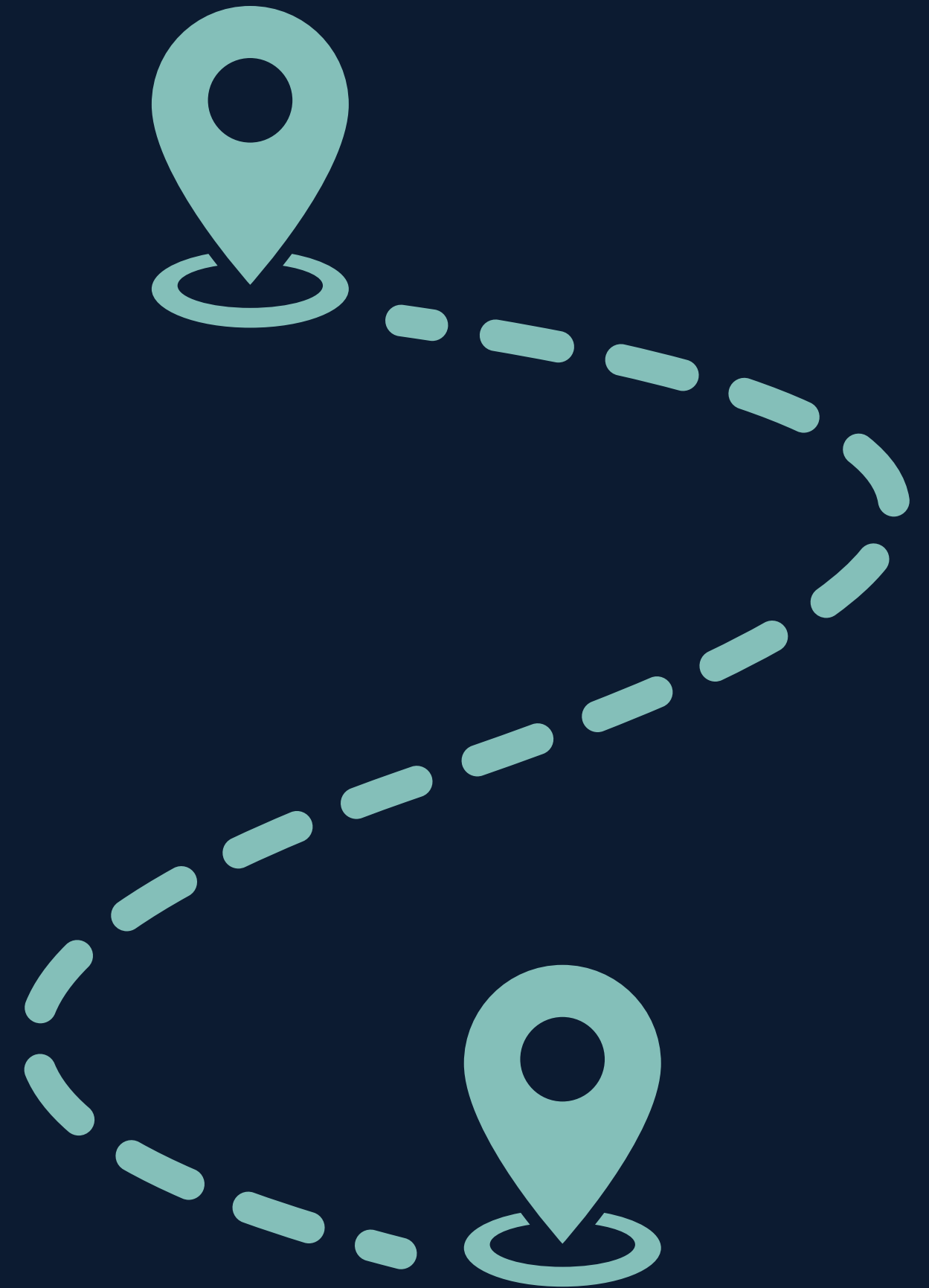
PUBLIC-PRIVATE
PARTNERSHIPS*

**For public-private partnerships, the public entity must be the primary applicant and is responsible for managing the project. Private sector partners can play a supporting role, with certain limitations on activities and funding structures.*

ARC funding is open to a range of organizations committed to advancing economic development and enhancing quality of life in the Appalachian region.

These include government entities, nonprofit groups, educational institutions, and partnerships that work to address the region's unique needs and opportunities.

Is my project
a good fit for
ARC?



ARC Investment Priorities

ARC goal areas are critical for selecting projects because they ensure investments align with strategic priorities that address the Appalachian region's most pressing needs.

By focusing on these areas, chosen projects can maximize their impact, foster sustainable growth, and create long-term benefits for communities.



01 Building Appalachian Businesses

Invest in entrepreneurship and business development to create jobs and build a robust regional economy.



02 Building Appalachia's Workforce Ecosystem

Develop a skilled workforce prepared to meet the demands of existing and emerging industries.



03 Building Appalachia's Infrastructure

Build and improve infrastructure, including broadband, water, transportation and energy systems, to foster economic growth.



04 Building Regional Culture and Tourism

Strengthen the region's natural and cultural assets to support economic development and community well-being.



05 Building Community Leaders and Capacity

Enhance the ability of local communities and leaders to plan, implement, and manage projects effectively.

Regional and State Priorities

Aligning with state and local economic development plans is essential when applying for ARC funding to ensure projects address regional priorities and demonstrate a cohesive strategy for growth.

Projects that align with these plans are more likely to gain support from stakeholders, fit into broader economic initiatives, and show their potential to create lasting impact, increasing their chances of approval and successful implementation.

NYS ARC Strategy

State-level goals, such as fostering economic opportunities, improving workforce readiness, and enhancing infrastructure, are tailored to the unique needs of Appalachian communities within New York. Demonstrating alignment with these goals strengthens a project's case for funding by showing its relevance to state priorities and its potential to contribute to regional growth, sustainability, and economic stability, while also advancing ARC's overarching mission.

Demonstrating alignment with state goals not only positions the project as a strong candidate for funding but also ensures it integrates seamlessly with complementary initiatives beyond ARC, leveraging broader programmatic synergies to maximize impact



Southern Tier 8 CEDS



Aligning with the Southern Tier 8 Comprehensive Economic Development Strategy (CEDS) is essential to ensure that projects reflect the priorities and needs of the local region. The CEDS outlines strategies to promote regional economic growth, strengthen workforce development, and enhance infrastructure across the Southern Tier.

By demonstrating alignment with this plan, projects show their relevance to local stakeholders, address pressing regional challenges, and contribute to the area's long-term prosperity. This alignment also underscores a project's role in advancing both state and federal ARC goals while remaining deeply rooted in the region's unique economic and community priorities.

Key Considerations for Project Planning



→ Project Impact

- Will the project have a broad, regional impact, enable replication across the region, and/or be integrated into the broader collaborative framework?
- Does the project respond to the unique needs of the region's demographics or key industry sectors?
- Partnerships: Q&A Session, 4/7/25 at Noon

→ Project Cost and Match

- Applications are limited to a maximum of \$250,000
- All ST8 Region counties are designated as "Transitional" requiring 50% matching funds of the total project cost.
- Budgets: Q&A Session, 4/9/25 at 2pm

→ Project Alignment

- Does the project meet the strategic goals of ARC? New York State? ST8 Comprehensive Economic Development Strategy?
- Have you been engaged with Southern Tier 8's strategic planning efforts, industry summits and other collaborative efforts?
- Performance Measures: Q&A Session, 4/14/225 at 2pm

→ Project Sustainability

- Grants generally 12-18 months
- How will the project or program be sustained in the long term?
- Maintenance and operation? Ongoing programmatic costs?
- Sustainability: Q&A Session, 4/17/25 at Noon

Partnerships

Letter of Commitment

- *Why are we partnering?*
- *Who is doing what?*
- *What resources are we contributing?*
- *How will we coordinate?*
- *How will we measure our shared success?*



Shared Goals

Clear, mutually
beneficial
objectives

Defined Roles

Specific Contributions
and partnership
structure

**Strong Projects.
Strong Results.**

Resource Commitments

Financial, in-kind or
expertise based
contributions

Communication and Metrics

Transparent collaboration,
progress tracking, and
impact evaluation

MEET THE MATCH



**Budgets Q&A:
Wednesday,
4/9 at 2pm!**

Local Match



LOCAL FUNDS

*General fund allocations,
municipal bonds, capital
funds, revenues*



STATE GRANTS

CFA, DRI, Others



IN-KIND

*Municipal staff time, materials,
equipment, fringe, indirect, etc.*



PHILANTHROPIC
CONTRIBUTIONS

*Foundation grants, donations,
funds raised by non-profit partners*



PRIVATE
INVESTMENTS

*Direct investments, land/building donations,
equipment/training/infrastructure support*



OTHER FEDERAL
PROGRAMS

*EDA, USDA, DOL, CDBG, other
non-ARC funds*

50%



50%

ARC Federal Funding



Up to \$250,000

Performance Measures


ARC performance measures are specific metrics used to evaluate the impact and effectiveness of funded projects. They help applicants build strong proposals by providing a framework to define goals, track outcomes, and ensure alignment with ARC's strategic priorities.

By clearly incorporating these measures, projects can demonstrate clear, measurable benefits, making them more competitive for funding.

GUIDANCE:

<https://www.arc.gov/resource/guide-to-arc-project-performance-measures/>

<https://admin.steny.org/southern-tier-8/assets/ca58ybf5geo8gcck>


Performance Measures Q&A:
Monday, 4/14 at 2pm!



01 Building Appalachian Businesses

- New businesses created
- Private investment leveraged
- Jobs created or retained



02 Building Appalachia's Workforce Ecosystem

- Individuals trained or certified
- Trainees who gain employment
- Partnerships with educational institutions



03 Building Appalachia's Infrastructure

- Households or businesses improved
- Miles of infrastructure upgraded
- Communities served



04 Building Regional Culture and Tourism

- Increase in tourism related revenue
- Partnerships or collaborations formed
- Community programs supported



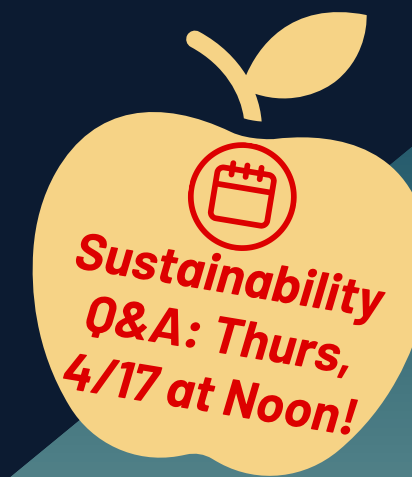
05 Building Community Leaders and Capacity

- Leaders or organizations trained
- Partnerships or collaborations formed
- Strategies or planning documents developed

Project Sustainability

Sustaining a project over the long term requires a strong foundation that maintains momentum, sustains resources, and ensures lasting impact.

- **Financial Stability**
 - Ongoing, diversified funding
 - Long-term financial planning (revenues, grants, cost-sharing)
 - Operations/maintenance
- **Organizational Capacity**
 - Continuity, clear structure and roles
 - Expertise, skilled staff and partners
 - Performance through systems for ongoing tracking
- **Community Support**
 - Stakeholder engagement and transparency to maintain relevance
 - Demonstrated success and benefits
 - Adaptability to address evolving needs
 - Commitment to long-term use



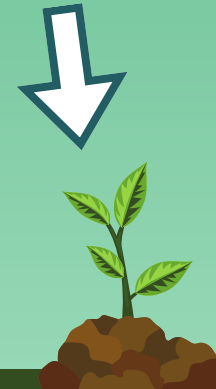
Sustainability

Financial Stability
Organizational Capacity
Community Support

Idea
Strategic/
Comprehensive
Planning



Foundation
Establish Partners
Align supporting
data

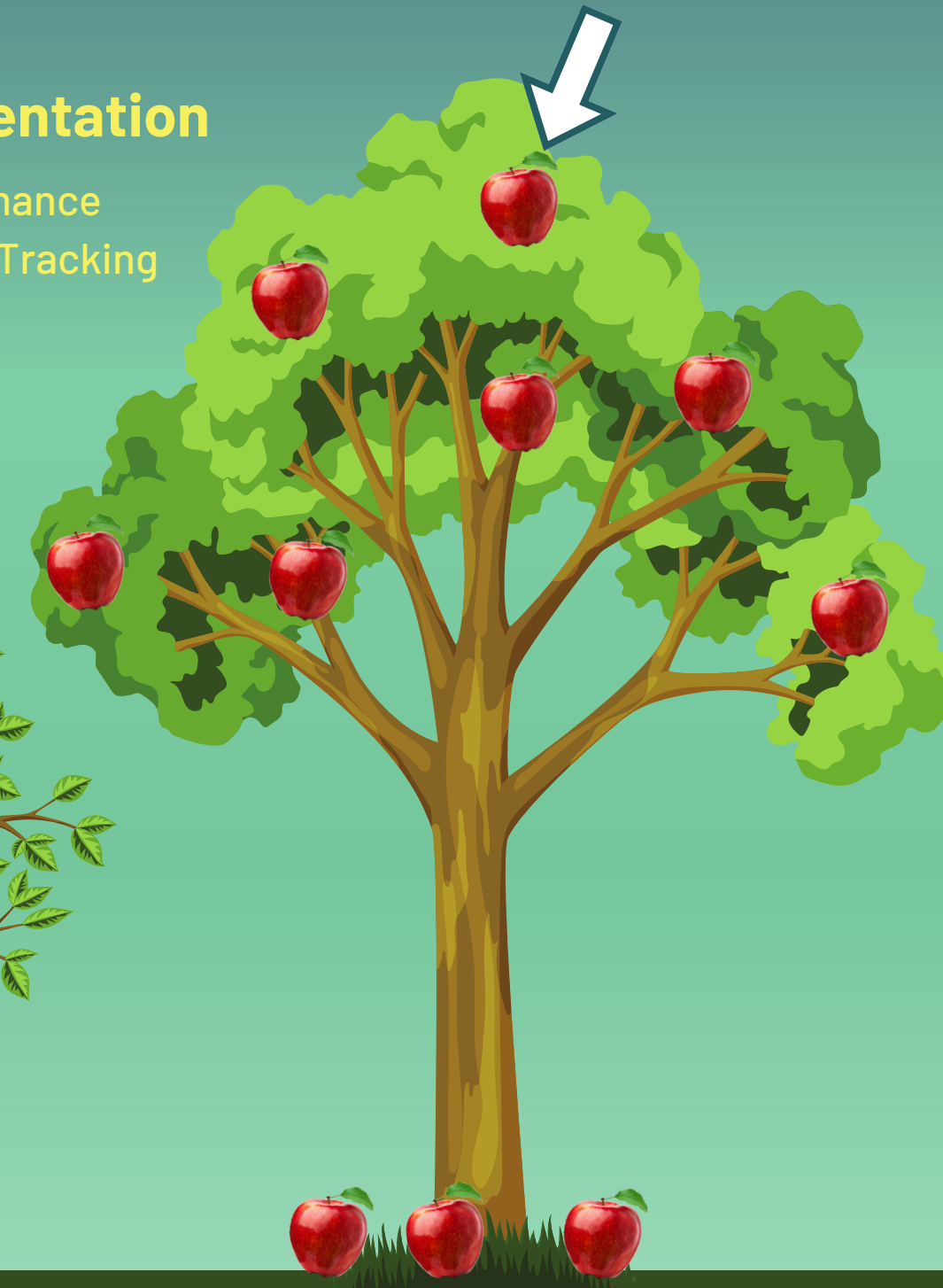


Initiation
ARC GRANT
Match Commitment



Implementation

Performance
Measures/Tracking



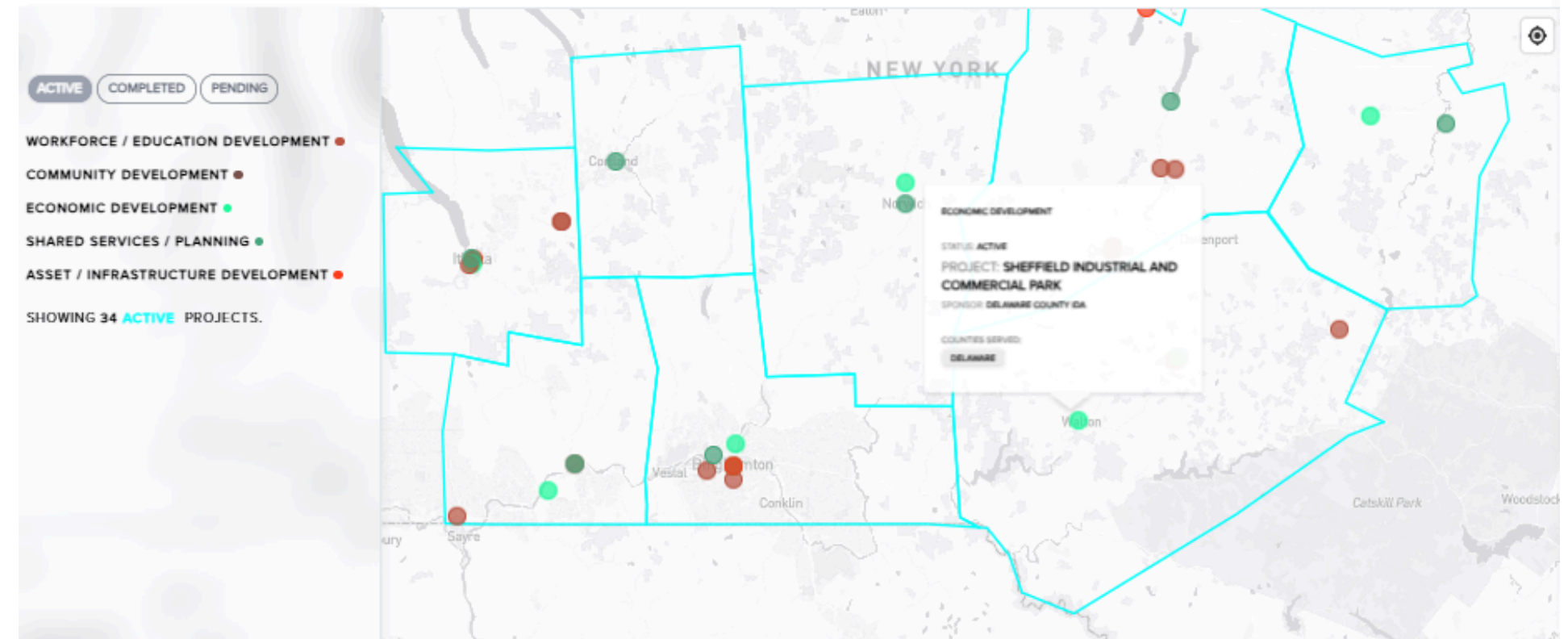
SO TIER

Showcase of Projects

[https://www.so-tier.com/
public-investments](https://www.so-tier.com/public-investments)

PUBLIC PROJECTS

\$72,427,721 AWARDED FOR 34 ACTIVE PROJECTS



CAREER DESTINATIONS - CONNECTING STUDENTS TO LOCAL JOBS AND CAREERS

WORKFORCE / EDUCATION DEVELOPMENT

INVESTMENT: \$99,817

INVESTOR: ARC

PARTNERS/SPONSORS: DCMO BOCES

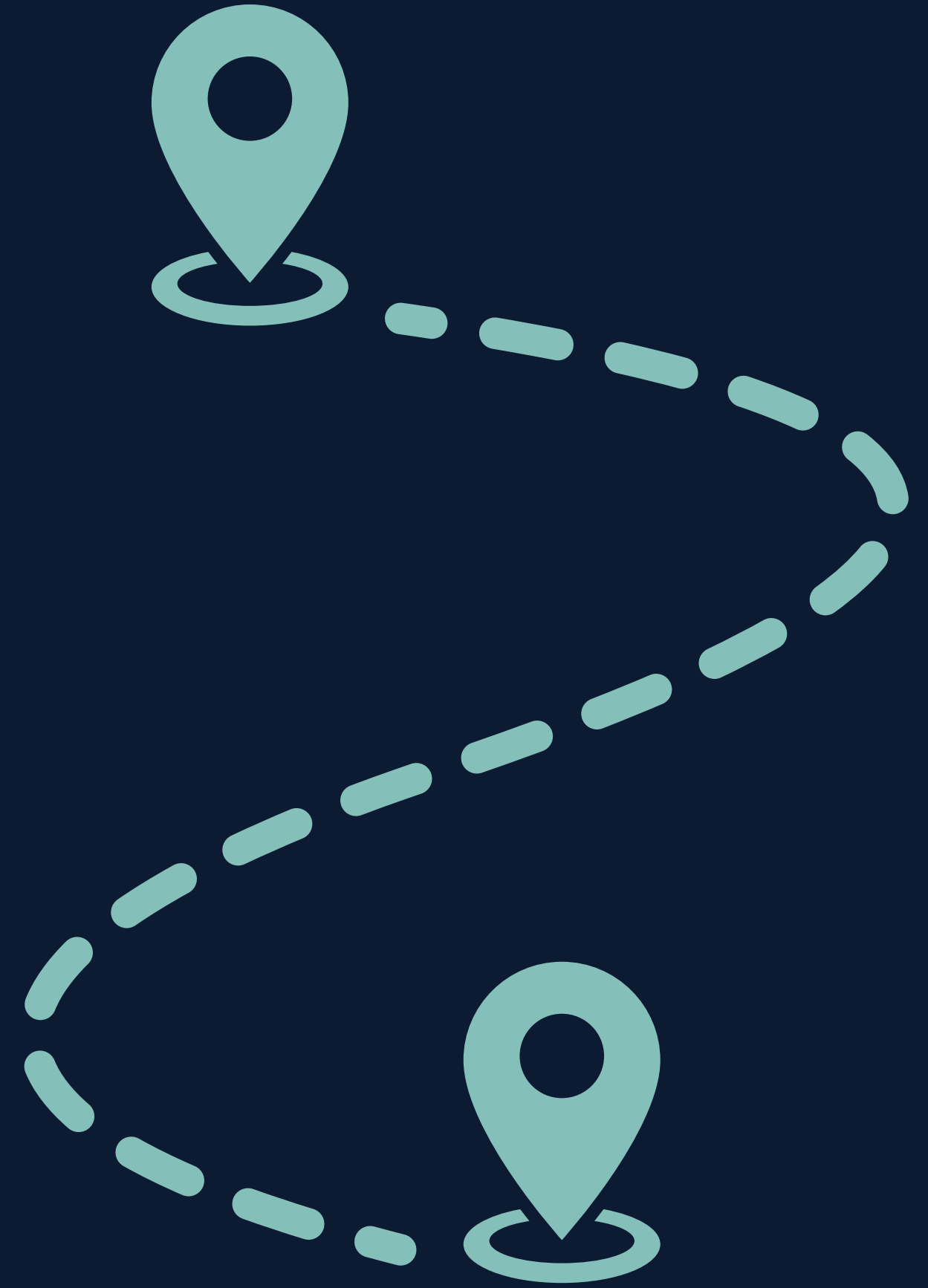
YEAR AWARDED: 2020

Prepare students to pursue higher education and employment within local industries, such as Advanced Manufacturing, Agriculture, Healthcare, and Business

IMPACT

WORKFORCE SERVED: 763

How can I apply?



ARC AREA DEVELOPMENT ROADMAP

Projects submitted for ARC funding are reviewed for inclusion in the following fiscal year, allowing for comprehensive evaluation and alignment with funding priorities. The ARC application process doubles as a project development tool, enabling applicants to refine their proposals for feasibility, regional impact, and strategic alignment. ST8 staff offers technical assistance throughout the process to streamline applications and ensure the region's projects are competitive and well-prepared.

Pre-application

Submit your pre-application with basic information about your project.



Feedback and Adjustments



Grant Review Committee

Pre-application is reviewed by ST8 staff and the ST8 Planning Committee for regional alignment and feasibility. Projects that are "ready" will be selected to move on to next steps.

Full Application

If the pre-app is approved, applicants receive an invitation to submit a full application with more detailed project plans and budget.



Feedback and Adjustments



Board Approval

After full applications are reviewed by the Planning Committee, recommendations for project funding are sent to the full ST8 board for their approval.

New York State Review

Funding packages are sent to NYS Department of State (DOS) to review for alignment with State priorities.



Feedback and Adjustments



ARC Review

Once review is completed, projects are forwarded to ARC for final approval and funding consideration.



Applicant

**Federal
ARC**

ARC Funds Awarded

Appalachian Regional Commission Review

Will receive feedback from ARC for any missing info or backup documentation.

**State
NYSDOS**

NYS Department of State Review

Will receive feedback from ST8 Board and NYSDOS for modifications.

**Local
ST8**

6/12: Full Application Deadline

Grant Review Committee Recommendation
Board Approval

5/19: Invitation to submit full application

Required Full App Q&A Session, 5/20

4/28: Pre-application Submitted by 3pm

Project Interviews, 4/28-5/13

Area Development Timeline



Date	Milestone
3/31	Pre-application Opens
4/28 at 3pm	Pre-application Submittal Deadline
Early May	Planning Committee Review
5/19*	Invitation to submit Full Application
6/12	Full Application Deadline
Summer	Planning Committee Review and Recommendations
Summer	ST8 Board Project Approvals
TBD	Project Packages Submitted to NYS
TBD	Project Packages Submitted to ARC

DEADLINE
APRIL 28TH
3PM

Submit your pre-application now...

A pre-application provides an initial project overview to assess eligibility and alignment with ARC priorities, offering feedback to refine proposals before full application.

Items to address early:

Federal Unique Entity Identifier (UEI)

Required for all federal funding applications, ensuring your organization is properly register in the System for Award Managment.

Letter of Alignment

Letter from the County Planning Directors in the counties served is required. This ensures that the project is also in alignment with local planning goals.



Find the pre-application form here:

<https://southerntier8.org/how-to-apply>

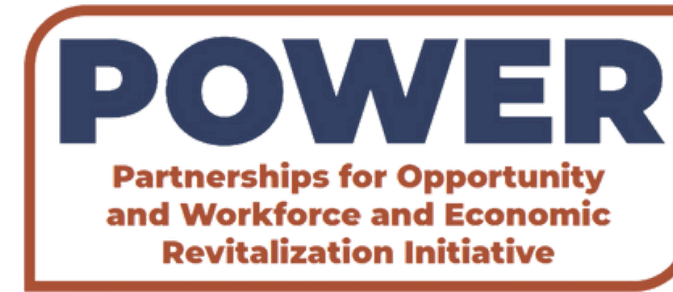
Exploring ARC's Specialized Grant Opportunities

ARC offers several other targeted grant opportunities that address specific challenges and opportunities within the Appalachian region.

Programs follow separate and individual processes and timelines.

As applicants move through the Area Development process, ST8 can help you explore how your project fits within the broader ecosystem of solutions.

Aligning with these targeted initiatives can enhance the project's impact by contributing to a coordinated regional effort to address critical challenges and opportunities that have been identified by ARC.



POWER helps diversify the economies of communities and regions affected by job losses in coal mining, coal power plant operations, and coal-related supply chain and logistics industries due to the changing economics of America's energy production



ARISE fosters creative collaboration across state lines to drive large-scale, regional economic opportunities that strengthen Appalachian businesses and industry



INSPIRE addresses the substance use crisis by creating or expanding a recovery ecosystem that will lead to workforce entry or re-entry of individuals in recovery from substance use disorder (SUD)



READY Appalachia is a community capacity-building initiative that offers flexible funding to Appalachian nonprofit organizations, community foundations, local governments, and Local Development Districts (LDDs), and no-cost cohort-based learning and hands-on training to the Appalachians who work for them

<https://www.arc.gov/grants-and-opportunities/>

Project Development Q&A

APR
4

ARC Program
Overview

APR
7

Partnerships

APR
9

Budgeting

APR
14

Performance
Measures

APR
17

Project
Sustainability

SOUTHERN TIER 8
R E G I O N A L B O A R D



NEED ASSISTANCE...

<https://southerntier8.org/how-to-apply>

<https://www.arc.gov>

BETH LUCAS

REGIONAL PLANNING DIRECTOR

BLUCAS@SOUTHERNTIER8.ORG

607.727.4002



SOUTHERN TIER 8
R E G I O N A L B O A R D

COUNTY PLANNING DIRECTORS

BROOME

ANTHONY FIALA, COMMISSIONER

ANTHONY.FIALA@BROOMECOUNTYNY.GOV

607.778.2114

DELAWARE

SHELLY JOHNSON-BENNETT, COMMISSIONER

SHELLY.JOHNSON@CO.DELAWARE.NY.US

607.832.5444

TIOGA

ELAINE JARDINE, PLANNING DIRECTOR

JARDINEE@CO.TIOGA.NY.US

607.687.8257

CHENANGO

SHANE BUTLER, PLANNING DIRECTOR

SHANEB@CO.CHENANGO.NY.US

607.337.1640

OTSEGO

TAMMIE HARRIS, PLANNING DIRECTOR

HARRIST@OTSEGOCOUNTY.COM

607.547.4228

TOMPKINS

KATIE BORGELLA, COMMISSIONER

KBORGELLA@TOMPKINS-CO.ORG

607.274.5560

CORTLAND

TRISHA HIEMSTRA, PLANNING DIRECTOR

THIEMSTRA@CORTLAND-CO.ORG

607.754.3404

SCHOHARIE

SHANE NICKLE, PLANNING DIRECTOR

NICKLE.SHANE@CO.SCHOHARIE.NY.US

607.295.8770